

# SHINSHU HERITAGE TOUR

**DAY TOUR**

**BACK TO THE 'SAMURAI' PERIOD  
@ MATSUMOTO AND OMACHI**



**Full Day 13,500yen**

※Tax Included

**Operating every Tuesdays and Saturdays.  
(Closed on 12/31 and 1/3 due to New Years Holiday)**

**The tour includes...**  
**Entrance fee to Matsumoto Castle and Chojiya Museum**  
**Lunch**  
**Transportation**  
**Matsuzaki Washi Factory**  
 ※Costume fee is excluded.  
 ※Alcohol and souvenirs are excluded  
 ※Minimum number of people to start the tour is 8.

When you come to think of authentic, ancient city in Japan which city do you imagine? Certainly Kyoto...maybe Kamakura, also Nara... Needless to say all of these cities are beautiful and world famous. BUT, WAIT!! Don't forget the city of Matsumoto and Omachi. Yes, Nagano is the Mecca for winter sports, but this prefecture has many other spots that many travelers enjoy other than winter activities. Moreover, Matsumoto Castle was authorized on ranking No.3 on Trip Advisor for "The Most Popular Travelling Destination in Japan" and "The Most Beautiful Castle in Japan" on Japanese traveling site. Let us show you the great historical city of Matsumoto and Omachi. Let's time slip to the Sengoku Period.

## HOW TO BOOK!?

**ONLINE** Visit [hakuba.lion-adventure.com](http://hakuba.lion-adventure.com) and click reservation for booking.

**PHONE** Please call 0261-72-5061 (81-261-72-5061 International Call )

**EMAIL** Please send us an enquiry to [hakuba@lion-adventure.com](mailto:hakuba@lion-adventure.com)

**DIRECT** Just stop by at our office in Happo area.  
5746-3 Hokujo Hakuba (Lion Café, across from Lawson Happo)

NOTE:

ALPS SWISS VILLAGE

You can have an authentic "Kaiseki" lunch.

It's a basic Japanese Ryokan Style dish which allows you to try many different kind of taste of Japanese food.

※Beverage is not included

Matsumoto  
NO.1 TOUR !!

# Shinshu Heritage Tour

Back To The "Samurai" Period @ Matsumoto and Omachi

**Fee : Full Day (9-10 hrs.) 13,500yen** ※Tax Included

Operating every Tuesdays and Saturdays.  
(Closed on 12/31 and 1/3 due to New Years Holiday)

Hakuba

DAY TOUR



NEXT



## Matumoto Castle

- Designated a National Treasure
- Oldest castle in Japan, and has never been broken down or caught on fire
- There are only 5 castles in Japan that are still in good condition since it was build and Matsumoto castle is one of the official castle. Many castles in Japan has renovated, collapsed, or caught on fire during World War 2.



- Very easy access to castle town since its not build on a large hill and compact castle area that you can see most of the things on foot

- You will be amazed how accurate carpenters back then, put the pillars without any nails or bolts.

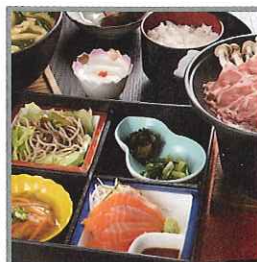


## Castle Town Street Walk

- Right near the main street, there is a street called the Frog Street. The river was flowing in this area back then and many frogs use to inhabit. This frogs name is Kajika Frog and it is known for its crying voice. Unlike normal frogs, Kajika Frogs tweets like a bird and makes a great healing sound.



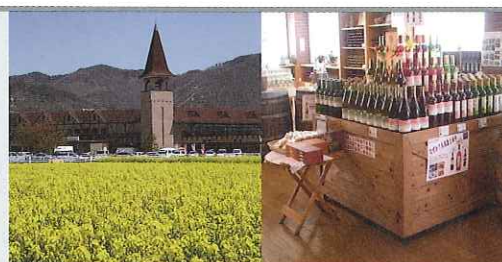
- In many places around the city you will find spring water fountain. Matsumoto has a great amount of underground spring water, therefore we have very easy access to clean and cold water, and of course it is FREE. In many places around the world, you usually have to pay for drinking water but not in Japan !!



## Alps Swiss Village

For lunch, you will get to have an authentic Japanese Sukiyaki Lunch. It comes with Shinshu Pork, Shinshu Salmon sashimi, tofu patty, local veggie salad and of course rice and miso soup. Japanese foods are very healthy and have low calories but it will fill you up!! Enjoy the authentic Shinshu made taste.

※Drinks are not included in a fee.

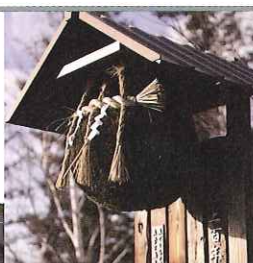


## Matsuzaki Washi

- You will be surprised how delicate the craftsman handles and makes the paper, and most importantly the material. It is 100% organic and natural.

和 (wa) → Japanese  
紙 (shi) → Paper

- Please enjoy watching the process making this beautiful paper!!!!!!  
You will have time to make one for yourself !!



## Suien Japanese Sake Factory

- Suien Japanese Sake Factory is one of the famous and well known sake in Nagano.
- Since Matsumoto and Omachi area has very clean and pure water, it is a nice environment to make sake.
- This sake is very popular among the locals it is considered to be the best seller around this area.
- You can taste several kinds of Sake at the Sake factory and will be a great souvenir for your friends or families back home. Bring a Made in Japanese SAKE home!!!

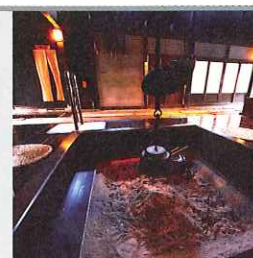


※The costume fee is not included.



## Chojiya Salt Road Museum

- This is called IRORI (Hearth), Japanese style fire place. You sit around this hearth, and there is a place above that travelers can dry their clothes.
- Inside, it is a museum about the salt road, and you can learn how people these days, traveled on foot carrying super heavy salt.



- You also have a time to cosplay!! Feel free to wear any costumes provided!!

Back to HAKUBA